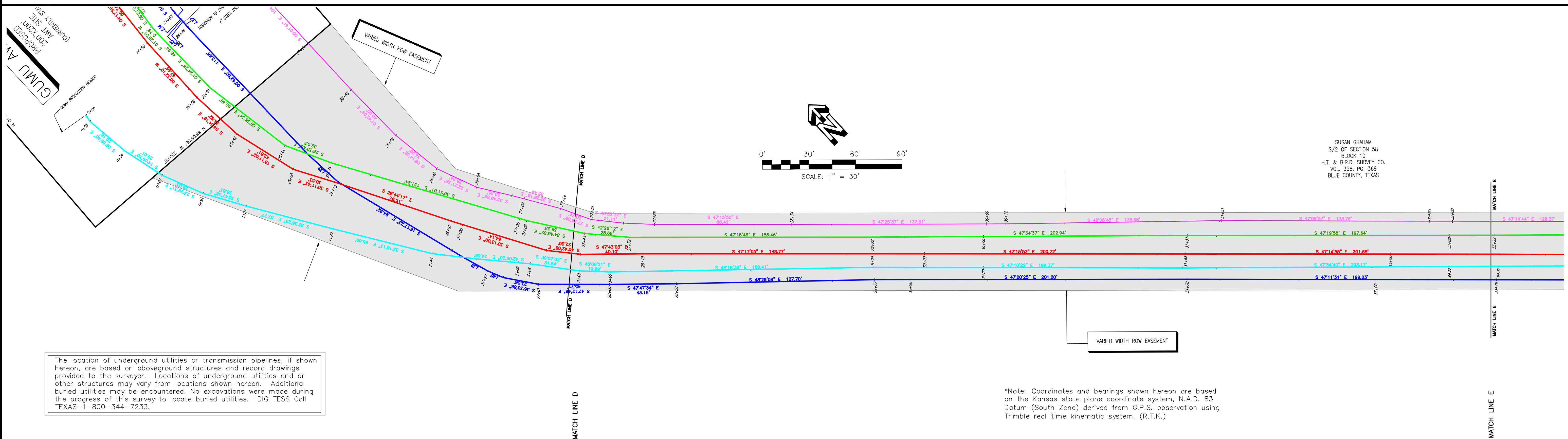


BLUE COUNTY, TEXAS

4" FIBERGLASS CO2 LINE  
 4" FIBERGLASS GAS RETURN LINE  
 3" FIBERGLASS ALBERT EINSTEIN PRODUCTION LINE  
 3" GRAHAM PRODUCTION LINE  
 4" FIBERGLASS H2O LINE

SUSAN GRAHAM



SUSAN GRAHAM  
 S/2 OF SECTION 58  
 BLOCK 10  
 H.T. & B.R. SURVEY CO.  
 VOL. 356, PG. 368  
 BLUE COUNTY, TEXAS

The location of underground utilities or transmission pipelines, if shown hereon, are based on aboveground structures and record drawings provided to the surveyor. Locations of underground utilities and/or other structures may vary from locations shown hereon. Additional buried utilities may be encountered. No excavations were made during the progress of this survey to locate buried utilities. DIG TESS Call TEXAS-1-800-344-7233.

\*Note: Coordinates and bearings shown hereon are based on the Kansas state plane coordinate system, N.A.D. 83 Datum (South Zone) derived from G.P.S. observation using Trimble real time kinematic system. (R.T.K.)

4" FIBERGLASS CO2 LINE	122'38" LEFT> PI 27145	04'06'17" LEFT> PI 27166	02'16'35" LEFT> PI 27186	28+00	07'09'46" LEFT> PI 28+74	30+00	04'43'08" LEFT> PI 30+12	32+00	01'01'46" RIGHT> PI 31+51	34+00	01'01'47" LEFT> PI 32+45
4" FIBERGLASS GAS RETURN LINE	07'17'39" LEFT> PI 27143	04'32'36" LEFT> PI 27172	02'20'33" LEFT> PI 27179	28+00	02'35'36" RIGHT> PI 28+19	30+00	01'14'39" LEFT> PI 29+49	32+00	01'14'39" RIGHT> PI 31+31	34+00	
4" FIBERGLASS ALBERT EINSTEIN PRODUCTION LINE											
3" GRAHAM PRODUCTION LINE	02'59'17" LEFT> PI 3+40	03'12'17" LEFT> PI 3+60		4+00		6+00	01'08'16" RIGHT> PI 5+29	8+00	02'41'77" LEFT> PI 7+28	8+00	
4" FIBERGLASS H2O LINE	28+00	01'54'46" LEFT> PI 28+26	04'11'34" LEFT> PI 28+50			30+00	01'05'43" RIGHT> PI 29+27	32+00	02'05'47" RIGHT> PI 31+29	34+00	

MAIN-LINE PIPE			
From	To	Description	Lin. Ft.
27+34	33+25	4" FIBERGLASS CO2 LINE	591.00'
27+36	33+27	4" FIBERGLASS GAS RETURN LINE	591.00'
27+73	33+65	3" FG. ALBERT EINSTEIN PROD. LINE	592.00'
3+34	9+27	3" GRAHAM PRODUCTION LINE	593.00'
27+81	33+74	4" FIBERGLASS H2O LINE	593.00'
TOTAL			2,691.00'

CASING PIPE						
From	To	Description	Lin. Ft.	Seds	Spacers	Vents
TOTAL						76.00'

**LEGEND**

- Interstate Highway
- Federal Highway
- State Highway
- MP 10
- Mile Post
- Foreign Pipeline
- Electric Line
- Telephone Line
- Buried Cable
- Fence
- Valve (Line Size Shown)
- Check Valve
- Relief Valve
- Meter Station
- Casing (Size and Length)
- C. I. Weight
- Conc. Weight
- Anchor
- Electrolysis Test Site
- Line Pipe W.T. Change
- Transition Sleeve
- Dwelling
- Class Location

**VALVES**

Valve No.	Nom. Size	Rating	Type	Manufacturer	Serial No.
SUMMARY					

**ASBUILT 04/27/2009**

Revisions: \_\_\_\_\_ Description: \_\_\_\_\_

**SURVEY SERVICES, INC.**  
 P.O. BOX 1590  
 GRANBURY, TEXAS 76048  
 (817) 578-8854 Office  
 (817) 578-8860 Fax

**PIPELINES R US, L.L.C.**

4" FIBERGLASS CO2 LINE  
 4" FIBERGLASS GAS RETURN LINE  
 3" FIBERGLASS ALBERT EINSTEIN PRODUCTION LINE  
 3" GRAHAM PRODUCTION LINE  
 4" FIBERGLASS H2O LINE  
 BLUE COUNTY, TEXAS

Drawn by: LH Checked by: LT  
 Approved by: L.T. AFE: 08CE029 AFE: 08CE030 AFE: 08CE031  
 Date: 04/27/2009 Scale: 1"=30'  
**SHEET 6 OF 8**